

Setting up the MCD4 -1999 CB/SH 16A THERMOSTAT

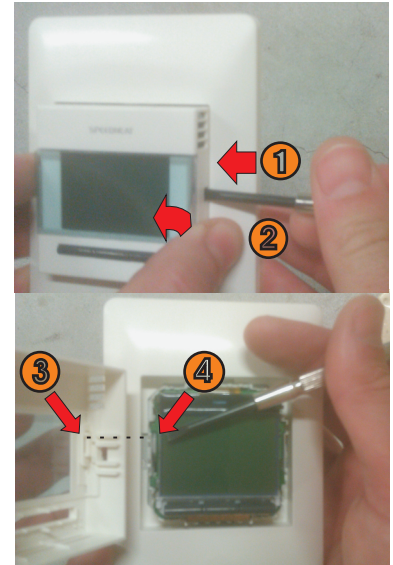
1 Removing the display cover

The thermostat cover disconnects **from the front** not the back of the thermostat.

Thermostat display cover separates from the backing plate by means of depressing the release tab on the sides (1) then easing out the same side using the thumb (2).

The backing plate and mounting plate can then accessed and the display can be rotated 90 degrees.

When re-connecting the display cover, ensure the white switch 'slot' (3) is in the corresponding position of the grey switch (4) on the thermostat. Check switch for good operation once the cover is clipped back into position.



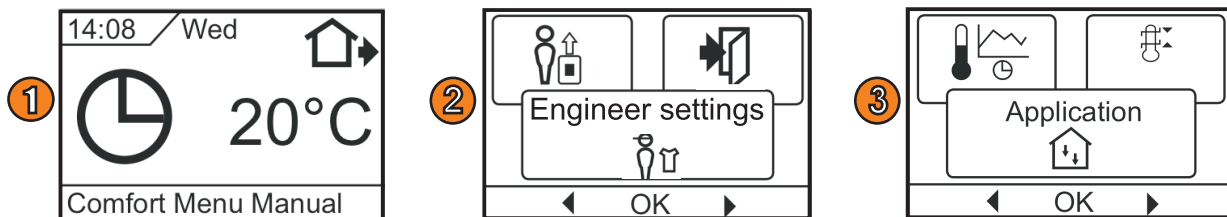
2 Selecting the Sensor

The factory default for temperature regulation is Room/limit, suitable for under timber floors, limiting the temperature range between 15 to 28°C.

For tiled and carpeted floors, once you have set up the language, time and date on the thermostat the main screen will appear (1). press the middle 'menu' button to enter the programming mode.

Using the right hand button, scroll to right to 'Engineer settings' and press OK to enter this sub menu. Scroll right again to the 'Application' setting and select 'Floor'. Application will re-appear. Scroll right again to 'Exit'.

NOTE: if the screen displays an **E2 Error message**, the supplied sensor has not been installed/connected. Repeat the steps above but select 'Room' instead



3 Changing the 4-Event Settings

Your thermostat comes with the following preset schedule;

	Day 1-5	(Weekdays)	(Application)	
	Event	Time	floor	room
(wake up) ☀	Morning	06:00-08:00	25°C	20°C
(at work) 🏠➡	Daytime	08:00-16:00	20°C	15°C
(at home) 🏠⬅	Evening	16:00-22:30	25°C	21°C
(overnight) 🌙	Night	22:30-06:00	20°C	15°C
	Day 6-7	(Weekends)	(Application)	
	Event			
(at home) ☀	Morning	08:00-23:00	25°C	21°C
(overnight) 🌙	Night	23:00-08:00	20°C	15°C

To change times or temperatures shown, Select menu (step 1 above), then 'OK' to enter '4-Event settings', then select the Weekday or Weekend Events.

Each event will allow you to change its start time and temperature. **To have the heating off during an event, set the temperature at 5 degrees.** (e.g. Night, 22:30, 5°C. The system is off at 10:30pm)

NOTE: The **end time** of an event (eg Morning) is, by default the start time of the next event (i.e. Daytime).