

SPECIFICATION

PRODUCT DESCRIPTION

Floor surface heating units must be a coaxial self-regulating, multi-stranded heating element insulated with Tefzel. The heating element must be protected by a full earth screen covered with a Tefzel outer insulation. The insulation must be tested to 5000 Volt and be fully waterproof. Floor heating must be installed at a ratio of 50-60 W/m² in bedrooms, and at a ratio of 75-90 W/m² in living or open areas. The temperature in each room must be controlled by means of a thermostat which must be wall mounted at approximately 1.2m above the finished floor level. Speedheat products may only be installed by an approved Speedheat installer/franchise and in accordance with the manufacturer's instructions (call 1800 85 75 65 for further details).

INSTALLATION IN NEW BUILDINGS - FIXED WIRING

Work by electrical sub-contractor:

Supply wiring must be installed in the wall cavity by the electrician, terminating at a standard vertical wall bracket at approximately 1.2m above floor level. A 20mmØ PVC conduit or draw wire must be installed by the electrician between the wall bracket and the floor level - refer to the Speedheat electrical detail. Heating circuits must be pre-wired on separate circuits (or combined on plug circuits if a nominal wattage of heating is specified) and protected by a RCD. All wiring must be terminated at the wall boxes/brackets and connected to the thermostats by the electrician. The thermostats will be supplied by the floor heating sub-contractor.

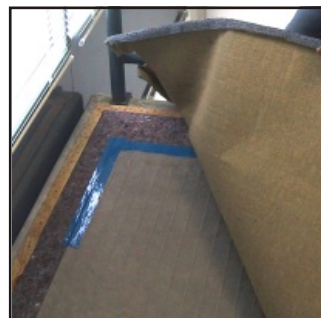
Work by the building contractor:

Floor areas to receive heating must be clean, smooth, and dust-free before handover to the floor heating sub-contractor. Rooms must be handed over, ready for the floor heating installation, in minimum groups of not less than 3 rooms at a time, unless otherwise requested by the heating sub-contractor.

Work by the floor heating sub-contractor:

a. For fitted carpets on underlay:

The heating blanket is fitted between the underlay and the carpet and should cover between 40 and 60% of the floor area to achieve the correct wattage of heating calculated for the room, taking into account orientation, insulation and volume of the room.



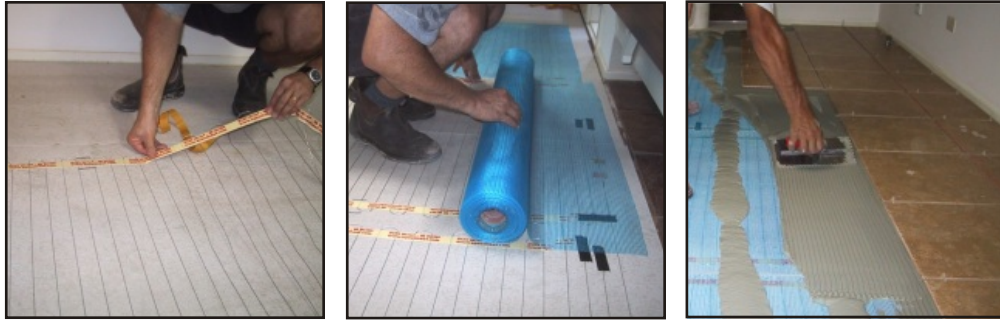
1800 85 75 65

info@speedheat.com.au
www.speedheat.com.au

Specification

b. Tiling - ceramic, marble, terracotta, etc:

The correct wattage of tile heating to a room is installed by fixing the heating element to the floor surface, with the heating elements at approximately 50mm centres. The heating elements must be covered with a self-adhesive fibreglass mesh. The total thickness of the heating element and mesh is approximately 2mm.



c. Carpeting fixed with adhesive:

The correct wattage of heating to a room must be installed, as for tiling. The carpeting sub-contractor must apply an additional 4-5mm self levelling screed over the heaters, feathered out to the adjoining areas not receiving heating elements. Carpeting can commence after the screed has cured. (Note: Rubber backed carpeting is not suitable!)

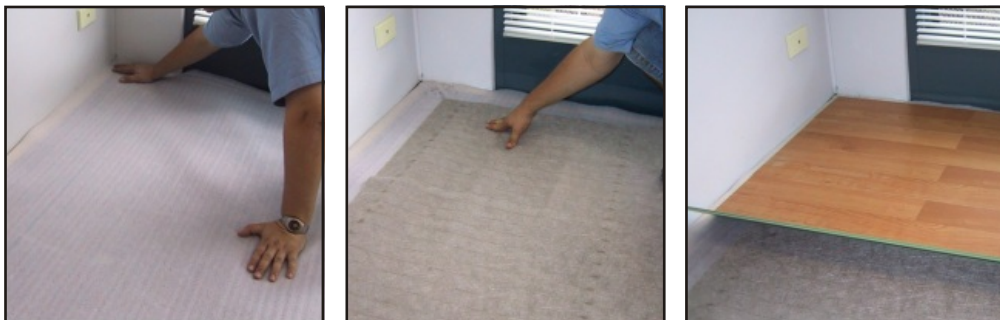
d. Vinyl and timber fixed with adhesive (recommended timber maximum thickness of 12mm):

The correct wattage of heating to a room must be installed, as for tiling. The flooring sub-contractor must apply an additional 4-5mm self levelling screed over the entire room to render it perfectly smooth and suitable for vinyl sheeting or glued down timber.



E. Floating laminate or timber (recommended timber maximum thickness of 12mm):

Moderate output carpet heaters are fitted between the foam underlay and the floating timber. The flooring sub-contractor must take care not to damage the panel heaters with sharp tools during the floating timber installation process.



INSTALLATION IN EXISTING BUILDINGS - PLUG POINT CONNECTION

Work by electrical sub-contractor: Install RCD protection to plug circuit, if required.

Work by the building contractor: Floor areas to receive heating must be clean, smooth, and dust-free before handover to the floor heating sub-contractor. Rooms must be handed over, ready for the floor heating installation, in minimum groups of not less than 3 rooms at a time, unless otherwise requested by the heating sub-contractor.

Work by the floor heating sub-contractor: Heating units must be connected through a thermostat by flexible cord and plug to a single phase 240 Volt power point. The electrical supply must be protected by a RCD. All wiring must be concealed in 25 x 12 mm surface mounted white PVC ducting.

MONITORING OF FLOORING INSTALLATION

During the installation process and until the floor finish (tiles, vinyl, timber or glued carpet) has been completed, a Speedheat monitor must stay connected to the heating unit to check on continuity as well as earth leakage. The monitor will sound an alarm in the event of damage to the heating unit.



COMPLETION

On completion of the floor finish, the Speedheat installer will remove the monitors, test the heaters for continuity and insulation resistance, and supply the electrician with the thermostats for connection of the heaters to the mains supply.

GUARANTEE

The Heating units must carry a factory and installation warranty.